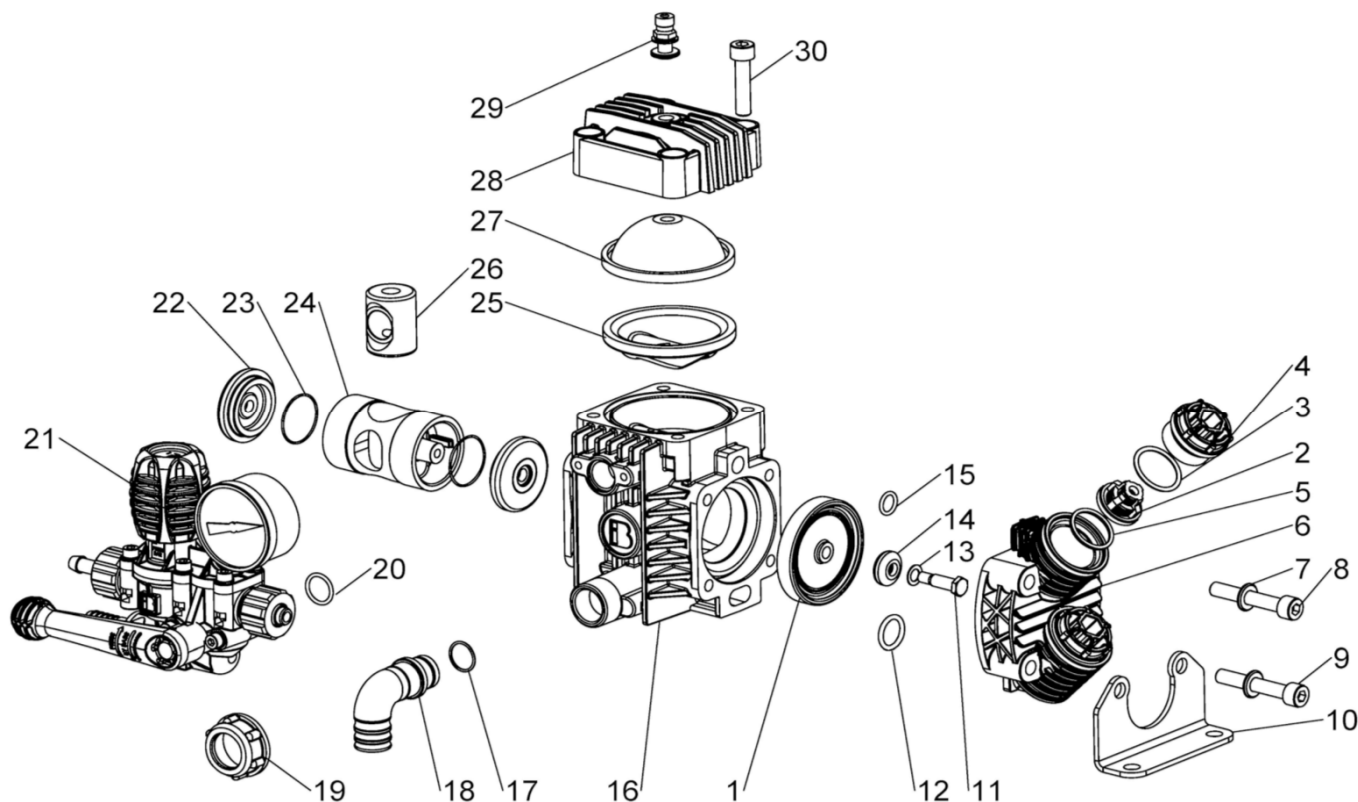
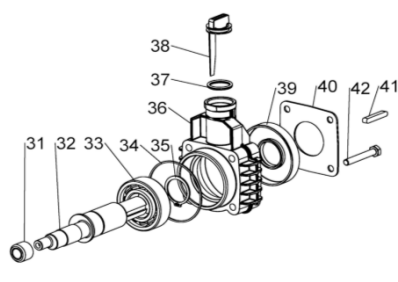


# STRIP VA-DE-D4

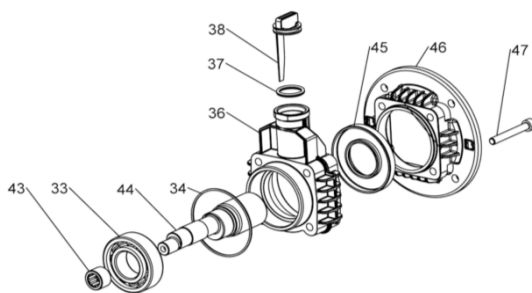


## VERSIONS

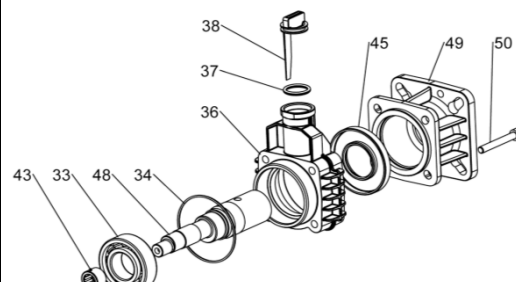
### VA



### DE



### D4



| POS. | CODICE PART NO. REF. | DENOMINAZIONE - DESCRIPTION - DESCRIPTION | Q.TY | POS. | CODICE PART NO. REF. | DENOMINAZIONE - DESCRIPTION - DESCRIPTION | Q.TY |
|------|----------------------|---|------|------|----------------------|---|------|
| 1    | 12.0040.31.2         | DIAPHRAGM                                 | 2    | 28   | 11.0004.09.2         | BALLASTER COVER                           | 1    |
| 2    | 11.9001.97.3         | VALVES                                    | 4    | 29   | 86.1608.50.2         | AIR VALVE                                 | 1    |
| 3    | 80.3219.00.2         | O-RING 3x25                               | 4    | 30   | 86.2730.00.2         | SCREW M8X30 UNI5931                       | 4    |
| 4    | 11.0152.32.2         | CAP                                       | 4    | 31   | 10.9815.97.3         | BEARING ASSEMBLY                          | 1    |
| 5    | 80.3200.00.2         | O-RING 2,62x22,22                         | 4    | 32   | 11.0131.42.2         | CRANKSHAFT VA                             | 1    |
| 6    | 11.0151.32.2         | HEAD                                      | 2    | 33   | 81.2707.00.2         | BEARING 25X52X15                          | 1    |
| 7    | 84.3685.00.2         | WASHER D.8,2X15X1,5                       | 8    | 34   | 80.3080.40.2         | O-RING 1,78x53,7                          | 1    |
| 8    | 86.2796.00.2         | SCREW M8X40 UNI5931                       | 4-8  | 35   | 80.1185.00.2         | SNAP RING D.25                            | 1    |
| 9    | 86.2853.00.2         | SCREW M8X45 UNI5931 (ONLY VA)             | 4    | 36   | 11.0153.32.2         | BEARING HOUSING                           | 1    |
| 10   | 11.0154.61.2         | MOUNTING RAIL (ONLY VA)                   | 2    | 37   | 80.3187.00.2         | O-RING 2,62x17,86                         | 1    |
| 11   | 11.0008.53.2         | DIAPHRAGM SCREW                           | 2    | 38   | 11.0022.32.2         | OIL ROD                                   | 1    |
| 12   | 80.3181.00.2         | O-RING 2,62x15,54                         | 2    | 39   | 80.2100.00.2         | OIL SEAL 25x62x10                         | 1    |
| 13   | 84.3620.10.2         | WASHER D.7,3x12x0,5                       | 2    | 40   | 11.0162.61.2         | FLANGE                                    | 1    |
| 14   | 11.0009.32.2         | DISK                                      | 2    | 41   | 80.6436.00.2         | KEY                                       | 1    |
| 15   | 80.3088.20.2         | O-RING 2,0x10                             | 2    | 42   | 86.2345.00.2         | SCREW M6X40 UNI5737                       | 4    |
| 16   | 11.0150.09.2         | CRANKCASE                                 | 1    | 43   | 10.9815.97.3         | BEARING ASSEMBLY                          | 1    |
| 17   | 80.3060.00.2         | O-RING 1,78X12,42                         | 1    | 44   | 11.0156.42.2         | SHAFT DE                                  | 1    |
| 18   | 84.0521.00.2         | 90° ELBOW CONNECTOR DIA.20                | 1    | 45   | 80.2125.50.2         | OIL SEAL D.30X62X7 (D4 15mm-5/8")         | 1    |
| 19   | 82.0042.10.2         | WING NUTG.3/4"                            | 1    | 46   | 80.2153.00.2         | OIL SEAL D.35X62X7 (DE-D4 3/4")           | 1    |
| 20   | 80.3088.00.2         | O-RING 2X15                               | 1    | 47   | 11.0155.09.2         | FLANGE DE (MEC80)                         | 1    |
| 21   | 94.7301.97.3         | PRESSURE REGULATOR PBP 25                 | 1    | 48   | 86.2405.10.2         | SCREW M6X50 UNI5931                       | 4    |
| 22   | 11.0011.32.2         | PISTON HEAD                               | 2    | 48   | 11.0157.42.2         | SHAFT D4S (15MM)                          | 1    |
| 23   | 80.3005.00.2         | O-RING 1,0x28                             | 2    | 48   | 11.0158.42.2         | SHAFT D4Q (5/8")                          | 1    |
| 24   | 11.0010.09.2         | PISTON                                    | 1    | 48   | 11.0159.42.2         | SHAFT D4Q (3/4")                          | 1    |
| 25   | 10.0040.31.2         | LOWER ACCUMULATOR DIAPHRAGM               | 1    | 49   | 04.0329.09.2         | FLANGE D4                                 | 1    |
| 26   | 11.0015.01.2         | PLUNGER ROD                               | 1    | 50   | 86.2355.00.2         | SCREW M6X45 UNI5931                       | 4    |
| 27   | 10.0041.31.2         | UPPER ACCUMULATOR DIAPHRAGM               | 1    |      |                      |   |      |