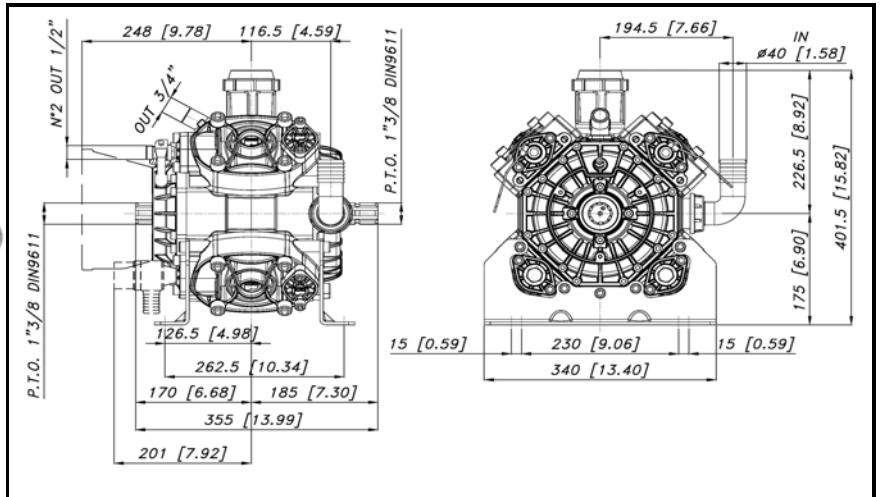
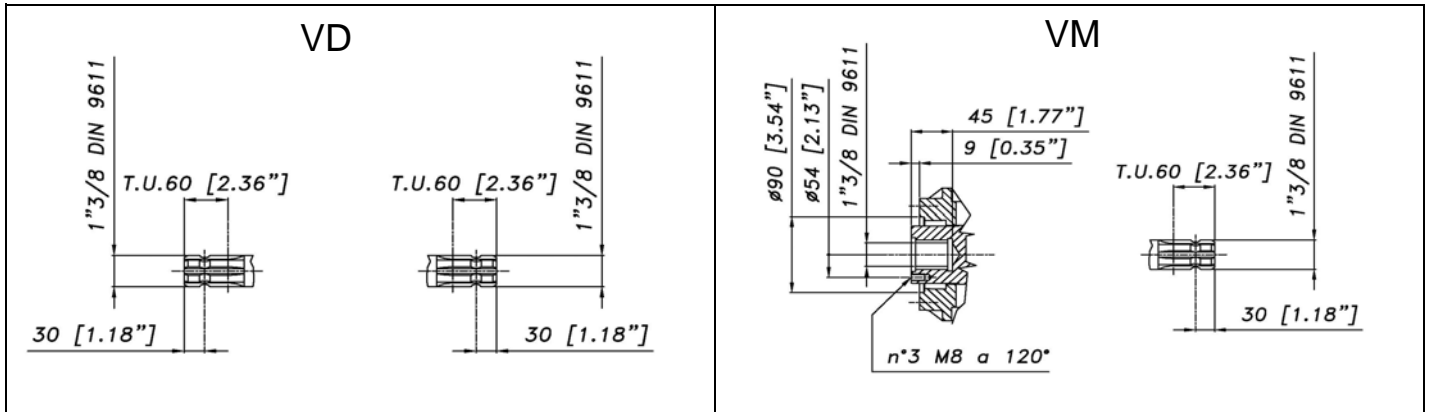




DIMENSIONI D'INGOMBRO - OVERALL DIMENSIONS



ALBERO POMPA - PUMP SHAFT



| COPPIA DI SERRAGGIO - TORQUE CHART |      |     |     |        |  |
|------------------------------------|------|-----|-----|--------|--|
| CODICE - CODE                      | Q.TY | POS | N-m | Lbr.ft |  |
| 86.2730.00.2                       | 20   | 3   | 22  | 16,2   |  |
| 86.2752.00.2                       | 8    | 4   | 22  | 16,2   |  |
| 86.3265.00.2                       | 9    | 12  | 44  | 32,5   |  |
| 86.3347.00.2                       | 1    | 15  | 44  | 32,5   |  |
| 41.9835.97.3                       | 4    | 22  | 25  | 18,5   |  |
| 86.4250.00.2                       | 16   | 45  | 108 | 79,7   |  |
| 86.3300.00.2                       | 16   | 52  | 44  | 32,5   |  |
| Tolleranza di serraggio: 0/-10%    |      |     |     |        |  |
| Tolerance on torque value: 0/-10%  |      |     |     |        |  |

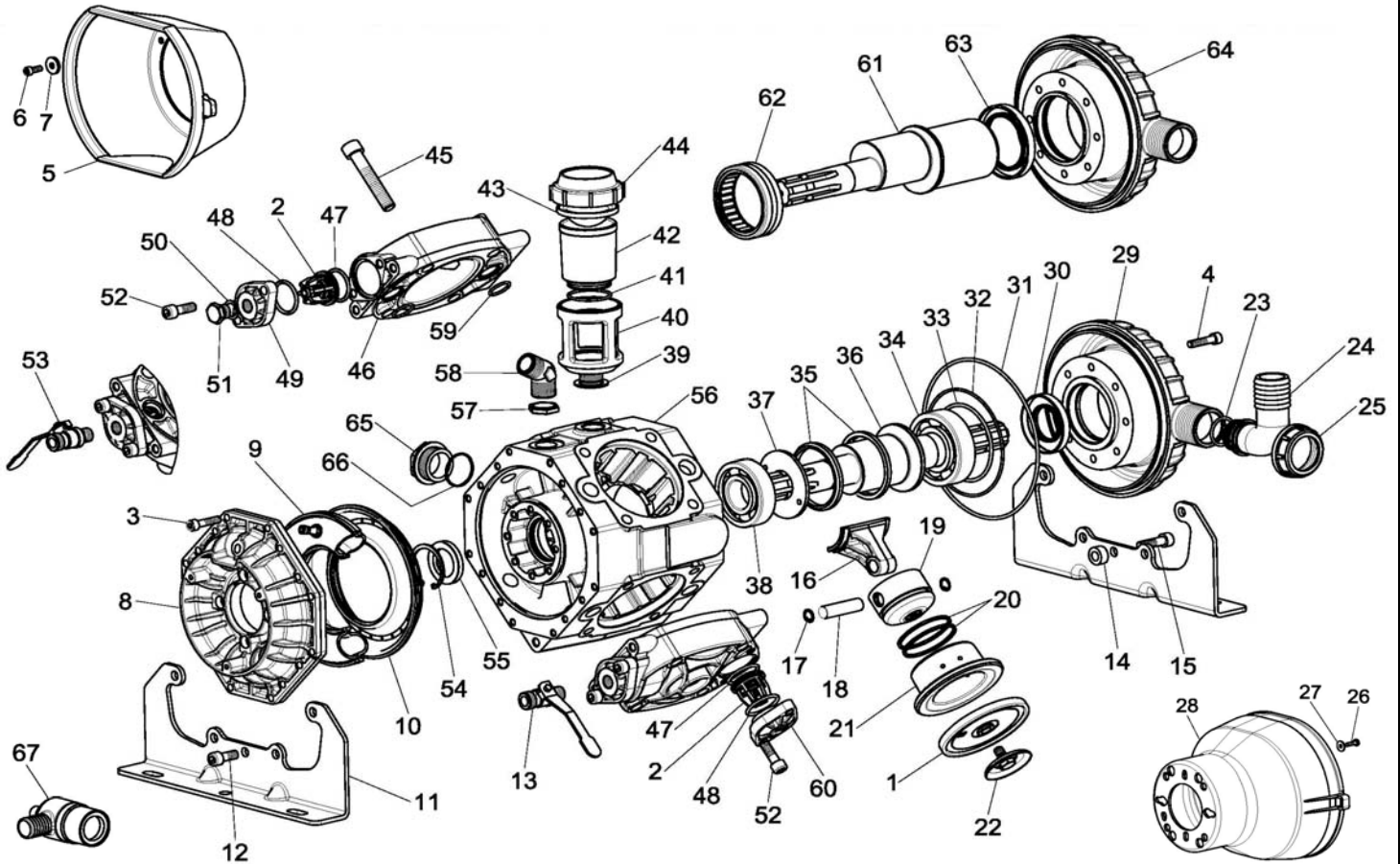
| INFORMAZIONI UTILI<br>USEFUL INFORMATION   |       |       |         |         |
|--|-------|-------|---------|---------|
| LUBRIFICANTE- LUBRICANT:<br>OLIO MOTORE O SEMIIDRAULICO SAE 30<br>MOTOR OIL OR SEMI-HYDRAULIC OIL SAE 30 |       |       |         |         |
| PRESSIONE ACCUMULATORE<br>ACCUMULATOR PRESSURE   |       |       |         |         |
| PRESSIONE DI LAVORO - OPERATING PRESSURE   | 2 ÷ 5 | 5÷10  | 10 ÷ 20 | 20 ÷ 50 |
| ACCUMULATORE ACCUMULATOR   | 2     | 2 ÷ 5 | 5 ÷ 7   | 6 ÷ 8   |

KIT MEMBRANE - DIAPHRAGMS KIT

| KIT                                      | BUNA - N |   |    | DES MOPAN | VITON |    |    |    |    | PENTAX |    |    |    |
|--|----------|---|----|-----------|-------|----|----|----|----|--------|----|----|----|
|  | 1        | 9 | 59 |           | 1     | 9  | 31 | 32 | 47 |        | 48 | 59 |    |
| POSIZIONE ESPLOSO<br>POSITION NUMBER     | 1        | 9 | 59 | 1         | 9     | 31 | 32 | 47 | 48 | 59     | 1  | 9  | 59 |
| QUANTITA' NEL KIT<br>QUANTITIES INCLUDED | 4        | 1 | 8  | 4         | 1     | 1  | 1  | 8  | 8  | 8      | 4  | 1  | 8  |

KIT POMPA/KIT VALVOLE - PUMP KIT/VALVES KIT

| KIT                                      | KIT POMPA VD<br>PUMP KIT VD |    |    |    |    |    |    |    | KIT POMPA VM<br>PUMP KIT VM | KIT VALVOLE<br>VALVE KIT |    |    |    |    |    |    |    |    |    |
|--|-----------------------------|----|----|----|----|----|----|----|-----------------------------|--------------------------|----|----|----|----|----|----|----|----|----|
|  | 55                          | 30 | 59 | 31 | 32 | 33 | 47 | 48 |                             |                          | 55 | 63 | 59 | 31 | 32 | 33 | 47 | 48 | 2  |
| POSIZIONE ESPLOSO<br>POSITION NUMBER     | 55                          | 30 | 59 | 31 | 32 | 33 | 47 | 48 | 55                          | 63                       | 59 | 31 | 32 | 33 | 47 | 48 | 2  | 47 | 48 |
| QUANTITA' NEL KIT<br>QUANTITIES INCLUDED | 1                           | 1  | 8  | 1  | 1  | 1  | 8  | 8  | 1                           | 1                        | 8  | 1  | 1  | 1  | 8  | 8  | 8  | 8  | 8  |



| POS. | CODICE PART NO. REF. | DENOMINAZIONE - DESCRIPTION - DESCRIPTION | Q.TY |
|------|----------------------|---|------|
| 1    | 95.0040.31.2         | BUNA-N PISTON DIAPHRAGM                   | 4    |
| 1    | 95.0040.33.2         | VITON PISTON DIAPHRAGM (OPTIONAL)         | 4    |
| 1    | 95.0040.00.2         | DESMOPAN PISTON DIAPHRAGM (OPTIONAL)      | 4    |
| 1    | 95.0040.36.2         | HPS PISTON DIAPHRAGM (OPTIONAL)           | 4    |
| 2    | 35.9802.97.3         | VALVES ASSEMBLY                           | 8    |
| 3    | 86.2730.00.2         | SCREW M8x30 UNI 5931                      | 20   |
| 4    | 86.2752.00.2         | SCREW M8x35 UNI 5931                      | 8    |
| 5    | 31.1466.32.2         | PLAIN SAFETY CONE (OPTIONAL)              | 1    |
| 6    | 86.1846.00.2         | SCREW M5,5x16 UNI 6954 (OPTIONAL)         | 3    |
| 7    | 84.3560.00.2         | WASHER DIA. 5,5x15x1,6 (OPTIONAL)         | 3    |
| 8    | 41.0105.09.2         | BALLASTER COVER                           | 1    |
| 9    | 41.0120.97.3         | NBR BALLASTER DIAPHRAGM                   | 1    |
| 9    | 41.0121.97.3         | VITON BALLASTER DIAPHRAGM (OPTIONAL)      | 1    |
| 9    | 41.0122.97.3         | EPDM BALLASTER DIAPHRAGM (OPTIONAL)       | 1    |
| 9    | 41.0123.97.3         | HPS BALLASTER DIAPHRAGM (OPTIONAL)        | 1    |
| 10   | 41.0104.09.2         | LOWER BALLASTER                           | 1    |
| 11   | 41.0113.61.2         | MOUNTING RAIL                             | 2    |
| 12   | 86.3265.00.2         | SCREW M10x25 UNI 5931                     | 9    |
| 13   | 84.5544.10.2         | LEFT TAP G.3/8-G.1/2                      | 1    |
| 14   | 41.0115.75.2         | MOUNTING RAIL SPACER                      | 1    |
| 15   | 86.3347.00.2         | SCREW M10x35 UNI 5931                     | 1    |
| 16   | 41.0009.09.2         | CONROD                                    | 4    |
| 16   | 41.0047.11.2         | BRONZE CONROD (OPTIONAL)                  | 4    |
| 17   | 80.0021.00.2         | RING DIA.15                               | 8    |
| 18   | 85.2007.00.2         | PISTON PIN DIA.15x54                      | 4    |
| 19   | 41.0025.09.2         | PISTON                                    | 4    |
| 20   | 81.8524.00.2         | PISTON RING                               | 8    |
| 21   | 41.0026.01.2         | PISTON SLEEVE                             | 4    |
| 22   | 41.9835.97.3         | KIT DISK + SCREW INOX                     | 4    |
| 23   | 80.3219.10.2         | O-RING DIA. 3.0x30                        | 1    |
| 24   | 84.0591.00.2         | 90° ELBOW CONNECTOR DIA.40-1,57"          | 1    |
| 25   | 82.0070.00.2         | WING NUT G.1"1/2                          | 1    |
| 26   | 86.1846.00.2         | SCREW M5,5x16 UNI 6954 (OPTIONAL)         | 4    |
| 27   | 84.3560.00.2         | WASHER DIA.5,5x15x1,6 (OPTIONAL)          | 4    |
| 28   | 31.1482.32.2         | PLAIN SAFETY CONE L.180 (OPTIONAL)        | 1    |
| 28   | 31.1468.32.2         | PLAIN SAFETY CONE L.135 (OPTIONAL)        | 1    |
| 29   | 41.0112.09.2         | INLET COVER "VD"                          | 1    |
| 30   | 80.2190.00.2         | OIL SEAL DIA.40x72x10 "VD"                | 1    |
| 31   | 80.3295.00.2         | O-RING DIA.3,53x190,10                    | 1    |
| 31   | 80.3295.50.2         | O-RING DIA.3,53x190,10 (KIT VITON)        | 1    |

| POS. | CODICE PART NO. REF. | DENOMINAZIONE - DESCRIPTION - DESCRIPTION | Q.TY |
|------|----------------------|---|------|
| 32   | 80.3210.70.2         | O-RING DIA.2,62x126,67                    | 1    |
| 32   | 80.3210.75.2         | O-RING DIA.2,62x126,67 (KIT VITON)        | 1    |
| 33   | 80.3291.00.2         | O-RING DIA.3,53x88,5                      | 1    |
| 34   | 81.2913.00.2         | BEARING 45X90X23                          | 1    |
| 35   | 14.0015.76.2         | CONROD HOLDING RING                       | 2    |
| 36   | 41.0033.26.2         | CRANKSHAFT "VD" (1"3/8 M-M)               | 1    |
| 37   | 41.0023.61.2         | CIRCLIP                                   | 1    |
| 38   | 81.2867.00.2         | BEARING 35X80X21                          | 1    |
| 39   | 82.4191.00.2         | GASKET DIA.27x38x2                        | 1    |
| 40   | 41.0015.09.2         | OIL FILLER BODY                           | 1    |
| 41   | 80.3209.40.2         | O-RING DIA.2,62x44,12                     | 1    |
| 42   | 41.0016.32.2         | OIL FILLER                                | 1    |
| 43   | 41.0017.31.2         | OIL FILLER DIAPHRAGM                      | 1    |
| 44   | 28.0144.32.2         | OIL FILLER COVER                          | 1    |
| 45   | 86.4250.00.2         | SCREW M14x70 UNI 5931                     | 16   |
| 46   | 41.0111.09.2         | PUMP HEAD                                 | 4    |
| 47   | 80.3251.00.2         | O-RING DIA.3,53x32,93                     | 8    |
| 47   | 80.3251.50.2         | O-RING DIA.3,53x32,93 (KIT VITON)         | 8    |
| 48   | 80.3262.00.2         | O-RING DIA.3,53x41,28                     | 8    |
| 48   | 80.3262.50.2         | O-RING DIA.3,53x41,28 (KIT VITON)         | 8    |
| 49   | 41.0110.09.2         | VALVE COVER G.3/8"                        | 4    |
| 50   | 82.4107.00.2         | GASKET                                    | 2    |
| 51   | 85.2579.00.2         | CAP G.3/8"                                | 2    |
| 52   | 86.3300.00.2         | SCREW M10x30 UNI 5931                     | 16   |
| 53   | 84.5544.00.2         | RIGHT TAP G.3/8-G.1/2                     | 1    |
| 54   | 80.1369.00.2         | RING DIA.52                               | 1    |
| 55   | 80.2143.10.2         | OIL SEAL DIA.35x52x7                      | 1    |
| 56   | 41.0108.09.2         | CRANKCASE                                 | 1    |
| 57   | 81.4909.00.2         | NUT G.3/4 OT.                             | 1    |
| 58   | 83.5063.28.2         | 60° ELBOW CONNECTOR G.3/4                 | 1    |
| 59   | 80.3200.00.2         | O-RING DIA.2,62x22,22                     | 8    |
| 59   | 80.3200.50.2         | O-RING DIA.2,62x22,22 (KIT VITON)         | 8    |
| 60   | 41.0109.09.2         | VALVE COVER                               | 4    |
| 61   | 41.0042.26.2         | CRANKSHAFT "VM" (1"3/8 M-F)               | 1    |
| 62   | 81.3027.00.2         | BEARING 72X90X25                          | 1    |
| 63   | 80.2286.00.2         | OIL SEAL DIA.72x90x10 "VM"                | 1    |
| 64   | 41.0116.09.2         | INLET COVER "VM"                          | 1    |
| 65   | 85.3520.00.2         | NYLON CAP M40x1,5                         | 1    |
| 66   | 80.3080.10.2         | O-RING DIA.1,78x34,65                     | 1    |
| 67   | 24.3050.97.3         | SAFETY VALVE 50 BAR (OPTIONAL)            | 1    |